

Island Dream Kitchens 2024 CRASH Regatta

Sidney North Saanich Yacht Club

September 13-15, 2024

Sidney BC, Canada



Sailing Instructions (SIs)
Version 1.0 – August 30th, 2024

The notation '[DP]' in a rule in the SI means that the penalty for a breach of that rule may, at the discretion of the protest committee, be less than disqualification.

An 'italicized' term means as defined in the Racing Rules of Sailing

1 RULES

The event is governed by the rules as defined in:

- a) The Racing Rules of Sailing
- b) The prescriptions of Sail Canada apply.
- c) For handicap fleets the current Rules of PHRF BC
- d) For One-Design fleets their respective class rules
- e) The Notice of Race (NoR) and these Sailing Instructions and any amendments to either.

2 CHANGES TO SAILING INSTRUCTIONS

- 2.1 Any change to the sailing instructions will be posted on-line at <https://crashregatta.com/> and on the official notice board before 08:30 on the day it will take effect, except that any change to the schedule of races will be posted by 20:00 on the day before it will take effect.

3 COMMUNICATIONS WITH COMPETITORS

- 3.1 Notices to competitors will be posted on the official notice board located in the entrance of the SNSYC clubhouse.
- 3.2 On the water, the race committee intends to monitor and communicate with competitors on VHF radio channel **72**.
- 3.3 [DP] From the first warning signal until the end of the last race of the day, except in an emergency, a boat shall not make voice or data transmissions and shall not receive voice or data communication that is not available to all boats.

4 CODE OF CONDUCT

- 4.1 [DP] Competitors and support persons shall comply with reasonable requests from race officials.

5 SIGNALS MADE ASHORE

- 5.1 Signals made ashore will be displayed at the SNSYC flagpole.
- 5.2 When flag AP is displayed ashore, '1 minute' is replaced with 'not less than 30 minutes' in Race Signals AP. This changes RRS 27.3.

6 SCHEDULE OF RACES

6.1

Friday, September 13th:

	From	To
<i>Visitor boats arrive</i>	<i>14:00</i>	<i>19:00</i>
<i>Registration Desk Open - racer sign-in - ticket purchases</i>	<i>15:00</i>	<i>19:00</i>
<i>SNSYC Pub Menu Available</i>	<i>17:00</i>	<i>close</i>

Saturday, September 14th:

	From	To
<i>Breakfast</i>	<i>08:00</i>	<i>09:00</i>
<i>Skippers Meeting</i>	<i>09:00</i>	<i>09:30</i>
<i>Warning Signal for First Race</i>	<i>10:30</i>	
<i>Dinner, Music, Prizes</i>	<i>18:00</i>	<i>close</i>

Sunday, September 15th:


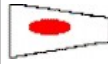




	From	To
<i>Breakfast</i>	<i>08:00</i>	<i>09:00</i>
<i>Warning Signal for First Race</i>	<i>10:30</i>	
<i>Regatta Award Ceremony</i>	<i>16:00</i>	

6.2 The scheduled time of the warning signal for the first race each day is 10:30.

6.4 On Saturday September 14th, no warning signal will be made after 16:00. On Sunday September 15th, no warning signal will be made after 15:00.

7 CLASS FLAGS

7.1 The class flags are as follows:

Multihulls	Code Flag "M"	
Division 1	Numeral Pennant 1	
Division 2	Numeral Pennant 2	
Division 3	Numeral Pennant 3	
Division 4 (if required)	Numeral Pennant 4	
Division 5 (if required)	Numeral Pennant 5	

8 RACING AREA

8.1 The racing area is bounded by Haro Strait, Moresby Passage, Coal Island, Sidney town and D'Arcy Island. This is shown in SI Addendum B.

9 COURSES

9.1 The table and diagrams in SI Addendum A and B show the courses,

including the order in which marks are to be passed, the side on which each mark is to be left and the approximate course length for each course.

- 9.4 Legs of the course will not be changed after the preparatory signal. This changes RRS 33.

10 MARKS

- 10.1 Rounding marks consist of navigational marks, islands, permanent club marks, and inflatable buoys. A description of the marks is given in SI Addendum B.
- 10.2 Where marks are islands or aids to navigation, competitors should check their charts and familiarize themselves with the extent of navigable water proximate to these marks

11 THE START

- 11.1 Races will be started using RRS 26 with the warning signal made 5 minutes before the starting signal.
- 11.2 The starting line is between a staff displaying an orange flag on the signal vessel at the starboard end and the course side of the port-end starting mark (an inflatable yellow cylinder).
- 11.3 Yellow inflatable marks may be attached to the signal vessel to protect it. These marks will be considered part of the signal vessel.
- 11.4 Boats whose warning signal has not been made shall avoid the starting area during the starting sequence for other races. [DP]
- 11.5 If any part of a boat's hull is on the course side of the starting line at her starting signal and she is identified, the race committee will attempt to hail her sail number. Failure to hail her number, failure of her to hear such a hail, or the order in which boats are hailed will not be grounds for a redress for request. The hail may be made via loudspeaker and/or VHF channel 72. This changes RRS 62.1(a).
- 11.6 A boat that does not start within 10 minutes after her starting signal will be scored Did Not Start without a hearing. This changes RRS A5.1 and A5.2.

12 SHORTENING THE COURSE

- 12.1 The course may be shortened (finished) at any mark of the course as per RRS 32.2. A race committee boat shall take station nearby the mark and display code flag "S" and sound two horns to alert competitors. As a courtesy, the race committee shall also announce the shortened course over VHF channel 72. Failure of the Race Committee to make a radio announcement, or competitors to hear a radio announcement shall not be grounds for redress

13 THE FINISH

- 13.1 The finishing line is between a staff displaying a blue flag on the finish boat at the starboard end and the course side of the port-end finishing mark (an inflatable red cylinder), to be sailed through in the direction

from the last mark.

- 13.2 If the race committee is absent when a boat finishes, she [should][shall] report her finishing time, and her position in relation to nearby boats, to the race committee at the first reasonable opportunity.

14 PENALTY SYSTEM

- 14.1 For all classes, RRS 44.1 is changed so that the Two-Turns Penalty is replaced by the One-Turn Penalty.

15 TIME LIMITS

- 15.1 The time limit for each race is 3 hours, with the exception of courses 17 and 18, for which the time limit is 4 hours, and courses 50, 51 and 52, for which the time limit is 2 hours.
- 15.3 Boats failing to *finish* within 30 minutes after the first boat that *sails the course* and *finishes*, not subsequently retiring, penalized or given redress, will be scored Time Limit Expired (TLE) without a hearing. A boat scored TLE shall be scored points for the finishing place one more than the points scored by the last boat that finished. This changes RRS 35, A5.1, A5.2 and A10.

16 HEARING REQUESTS

- 16.1 For all boats the protest time limit is 45 minutes after the finish boat docks. The time will be posted on the official notice board.
- 16.2 Hearing request forms are available at the official notice board.
- 16.3 Notices will be posted no later than 15 minutes after the protest time limit to inform competitors of hearings in which they are parties or named as witnesses. Hearings will be held in the protest room, located upstairs in the SNSYC clubhouse, beginning at the time posted on the hearing notice.

17 SCORING

- 17.1 One race is required to be completed to constitute a series.
- 17.2 (a) When fewer than five races have been completed, a boat's series score is the total of her race scores.
- (b) When five or more races have been completed, a boat's series score is the total of her race scores excluding her worst scores.
- 17.3 PHRF-BC Time-On-Time calculations will be used for scoring divisions that are not one-design. Boats that are handicapped under PHRF-NW will be given a PHRF-BC rating for the event at no charge.

18 SAFETY REGULATIONS

- 18.1 [DP] A boat that retires from a race shall notify the race committee at the first reasonable opportunity.

19 TRASH DISPOSAL

- 19.1 As sailors, we seek to protect and restore our oceans and coastal waters. See RRS 47. Trash must be contained on board and disposed of appropriately when back ashore. All garbage and recycling is to be

deposited in the North Saanich Marina facilities provided.

20 BERTHING

20.1 [DP] Boats shall be kept in their assigned places while in the harbour.

21 HAUL-OUT RESTRICTIONS

21.1 [DP] Boats shall not be hauled out during the event except with and according to the terms of prior written permission of the race committee.

22 DIVING EQUIPMENT AND PLASTIC POOLS

22.1 Underwater breathing apparatus and plastic pools or their equivalent shall not be used around keelboats between the preparatory signal of the first race and the end of the last race of the event.

22.2 Keelboats shall not be cleaned below the waterline by any means during the event.

23 PRIZES

23.1 Prizes will be awarded at SNSYC following the final race of the event.

24 RISK STATEMENT

24.1 RRS 3 states: 'The responsibility for a boat's decision to participate in a race or to continue to race is hers alone.' By participating in this event each competitor agrees and acknowledges that sailing is a potentially dangerous activity with inherent risks. These risks include strong winds and rough seas, sudden changes in weather, failure of equipment, boat handling errors, poor seamanship by other boats, loss of balance on an unstable platform and fatigue resulting in increased risk of injury.

Inherent in the sport of sailing is the risk of permanent, catastrophic injury or death by drowning, trauma, hypothermia or other causes.

25 INSURANCE

25.1 Each participating boat shall be insured with valid third-party liability insurance with a minimum cover of \$2,000,000 CAD per incident for Canadian vessels, and at least \$400,000 US for US vessels. A hard copy of the insurance certificate must be on board while racing.

SI ADDENDUM A: COURSE DESCRIPTIONS

Southerly Wind

Course ID #	Marks to Round	Course Distance
10	Start, U2 to port, Finish	4.0
11	Start, U2 to port, Mark 3 to port, U2 to port, Finish	6.9
12	Start, U2 to port, Ker Island Mark to port, Mark 3 to port, Finish	6.5
13	Start, Saanichton Barge Buoy to port, Finish	7.0
14	Start, Saanichton Barge Buoy to port, red buoy U6 to starboard, Ker Island Mark to port, Mark 3 to port, Finish	9.2
15	Start, James Island Mark to port, Mark 3 to port, James Island Mark to port, Finish	8.0
16	Start, James Island Mark to port, Ker Island Mark to port, Mark 3 to port, Finish	7.0
17	Start, D'Arcy Shoals Buoy U1 to port, Finish	11.5
18	Start, James Island Mark to port, D'Arch Shoals Buoy U1 to port, Finish	12.1

Westerly Wind

Course ID #	Marks to Round	Course Distance
20	Start, red buoy U6 to port, Sidney Spit Mark to port, Mark 3 to port, Finish	3.1
21	Start, red buoy U6 to starboard, Ker Island Mark to starboard, Sidney Spit Mark to port, Mark 3 to port, Finish	4.0
22	Start, red buoy U6 to port, South Cod Reef Buoy to port, Mark 3 to port, Finish	7.1
23	Start, red buoy U6 to port, James Island Mark to port, Sidney Spit Mark to port, Mark 3 to port, Finish	6.3
24	Start, red buoy U6 to port, Saanichton Barge Buoy to port, Sidney Spit Mark to port, Mark 3 to port, Finish	8.8

Easterly Wind

Course ID #	Marks to Round	Course Distance
30	Start, Sidney Spit Mark to port, Finish	1.6
31	Start, Sidney Spit Mark to port, Ker Island Mark to port, Sidney Spit Mark to port, Finish	4.4
32	Start, Sidney Spit Mark to port, red buoy U6 to port, Sidney Spit Mark to port, Finish	4.6
33	Start, South Cod Reef Buoy to port, Finish	5.1
34	Start, Sidney Spit Mark to port, James Island Mark to port, Sidney Spit Mark to Port, Finish	6.1
35	Start, Sidney Spit Mark to port, Saanichton Barge Buoy to port, Sidney Spit Mark to port, Finish	9.2

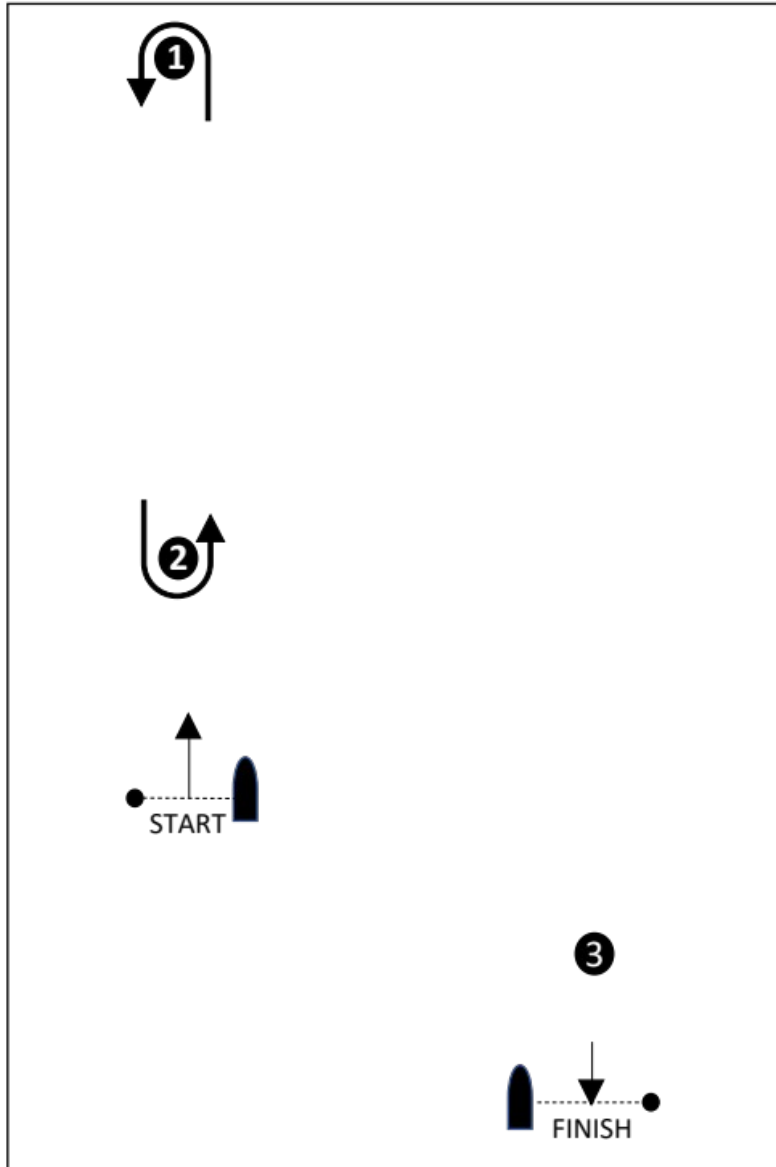
Northerly Wind

Course ID #	Marks to Round	Course Distance
40	Start, Ker Island Mark to port, Finish	1.7
41	Start, Ker Island Mark to port, Mark 3 to port, Ker Island Mark to port, Finish	5.2
42	Start, Ker Island Mark to port, red buoy U6 to port, Ker Island Mark to port, Finish	6.7
43	Start, Ker Island Mark to port, Sidney Spit Mark to starboard, James Island Mark to starboard, Ker Island Mark to port, Finish	9.2
44	Start, Ker Island Mark to port, Saanichton Barge Buoy to port, Ker Island Mark to port, Finish	9.7

Round the Buoys

Course ID #	Marks to Round	Course Distance
50	Start, Mark 1 to port, Finish	-
51	Start, Mark 1, Mark 2, Mark 1, all to port, Finish	-
52	Start, Mark 1, Mark 2, Mark 1, Mark 2, Mark 1, all to port, Finish	-

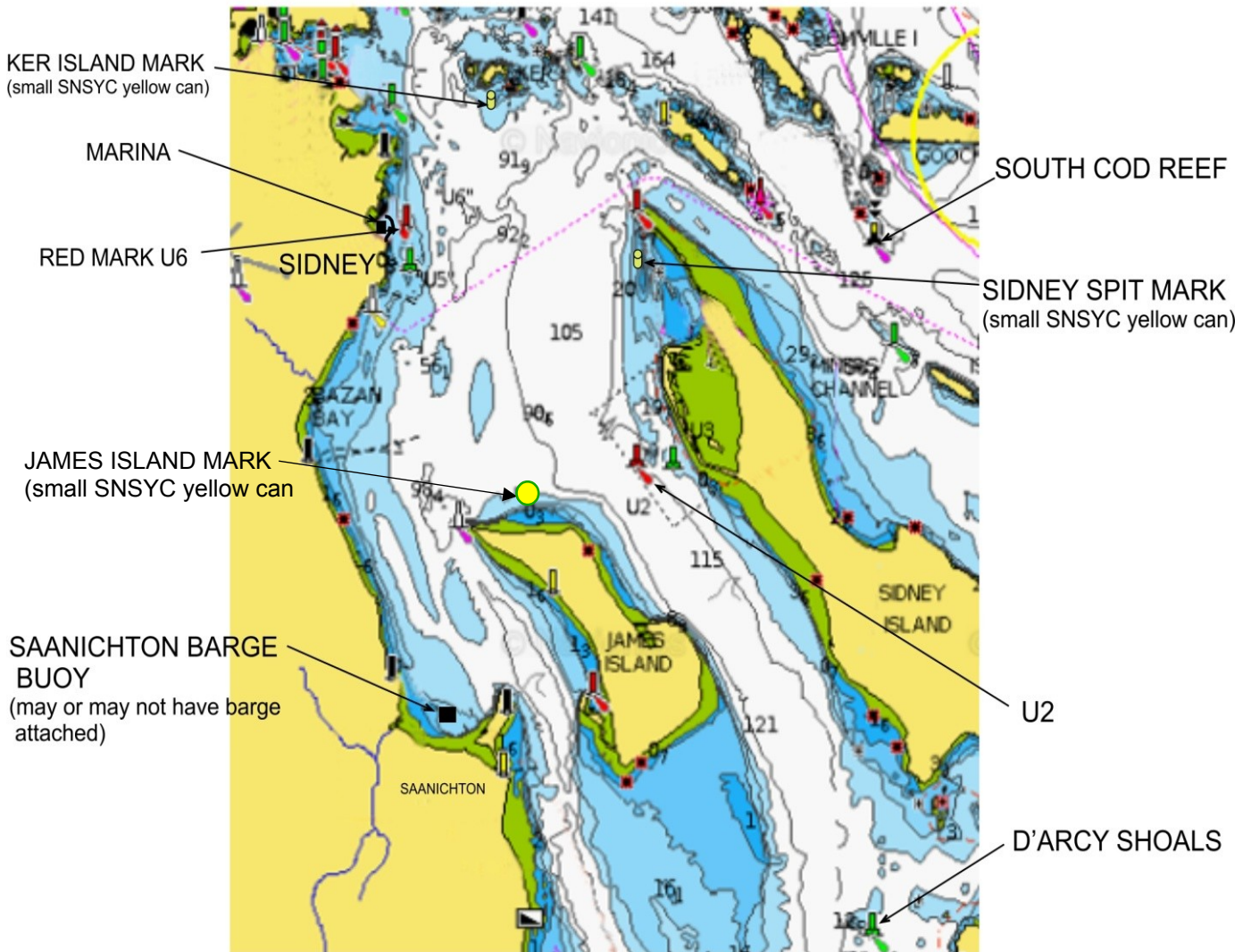
Course Diagram



Course ID	Round the Buoys Course to Sail
50	Start – 1 - Finish
51	Start – 1 – 2 – 1- Finish
52	Start – 1 – 2 – 1 – 2 – 1 - Finish

Mark **3** is not a mark of the course for the Round the Buoys courses

SI ADDENDUM B: Mark Locations



All marks are navigational marks except:

Ker Island Mark - private SNSYC yellow buoy at N 48°40.00; W 123°22.42

Sidney Spit Mark - private SNSYC yellow buoy at N 48°39.06; W 123°20.80

James Island Mark - private SNSYC yellow buoy at N 48°37.19'; W 123°21.75'

Saanichton Barge Buoy - private barge buoy, may have barge attached, at N 48°35.82; W 123°22.86. It is the furthest west of the three buoys.

